



Jabfloor Premium within a Perimeter Floor

Table 1

Thickness	U-value					
	0.21 W/m ² K	0.22 W/m ² K	0.20 W/m ² K	0.18 W/m ² K	0.15 W/m ² K	0.10 W/m ² K
100	0.21	0.22	0.20	0.18	0.15	0.10
120	0.21	0.22	0.20	0.18	0.15	0.10
140	0.21	0.22	0.20	0.18	0.15	0.10
160	0.21	0.22	0.20	0.18	0.15	0.10
180	0.21	0.22	0.20	0.18	0.15	0.10
200	0.21	0.22	0.20	0.18	0.15	0.10
220	0.21	0.22	0.20	0.18	0.15	0.10
240	0.21	0.22	0.20	0.18	0.15	0.10
260	0.21	0.22	0.20	0.18	0.15	0.10
280	0.21	0.22	0.20	0.18	0.15	0.10
300	0.21	0.22	0.20	0.18	0.15	0.10
320	0.21	0.22	0.20	0.18	0.15	0.10
340	0.21	0.22	0.20	0.18	0.15	0.10
360	0.21	0.22	0.20	0.18	0.15	0.10
380	0.21	0.22	0.20	0.18	0.15	0.10
400	0.21	0.22	0.20	0.18	0.15	0.10

APPLICATION:

Floor insulation – perimeter floor

Products: Jabfloor *Premium* 70 and 100

Jabfloor *Premium* insulation can be used in all floor constructions for both domestic and commercial buildings. Perimeter floor insulation is mostly used in non-domestic applications. The application will determine the grade of Jabfloor *Premium* required for your project.

Jabfloor *Premium*

Jabfloor *Premium* 70 and 100 can be used as perimeter insulation in solid and precast concrete floor constructions where no additional insulation is required to satisfy the relevant U-value requirements. The board is placed horizontally beneath the slab and/or vertically at the perimeter wall in order to prevent cold-bridging at external wall and floor junctions.

Easy to handle

Jabfloor *Premium* is manufactured from low lambda expanded polystyrene (EPS) which is lightweight and easy to handle on site.

Permanent

Jabfloor *Premium* is rot-proof and durable and will remain effective for the life of the building. It also has the added advantage of being flood-proof.

Rapid construction

No specialised trades or equipment are required.

Versatile

Jabfloor *Premium* can be used above or below the damp-proof membrane.

Environment

Expanded polystyrene has been awarded an A+ rating by the BRE's Green Guide to Specification.

Type

Jabfloor *Premium* 70 is supplied as EPS 70 and 100 as defined in BS EN 13163 – Reaction to Fire Class E, containing a flame-retardant additive.

Dimensions

Standard size: 2400 x 1200mm.

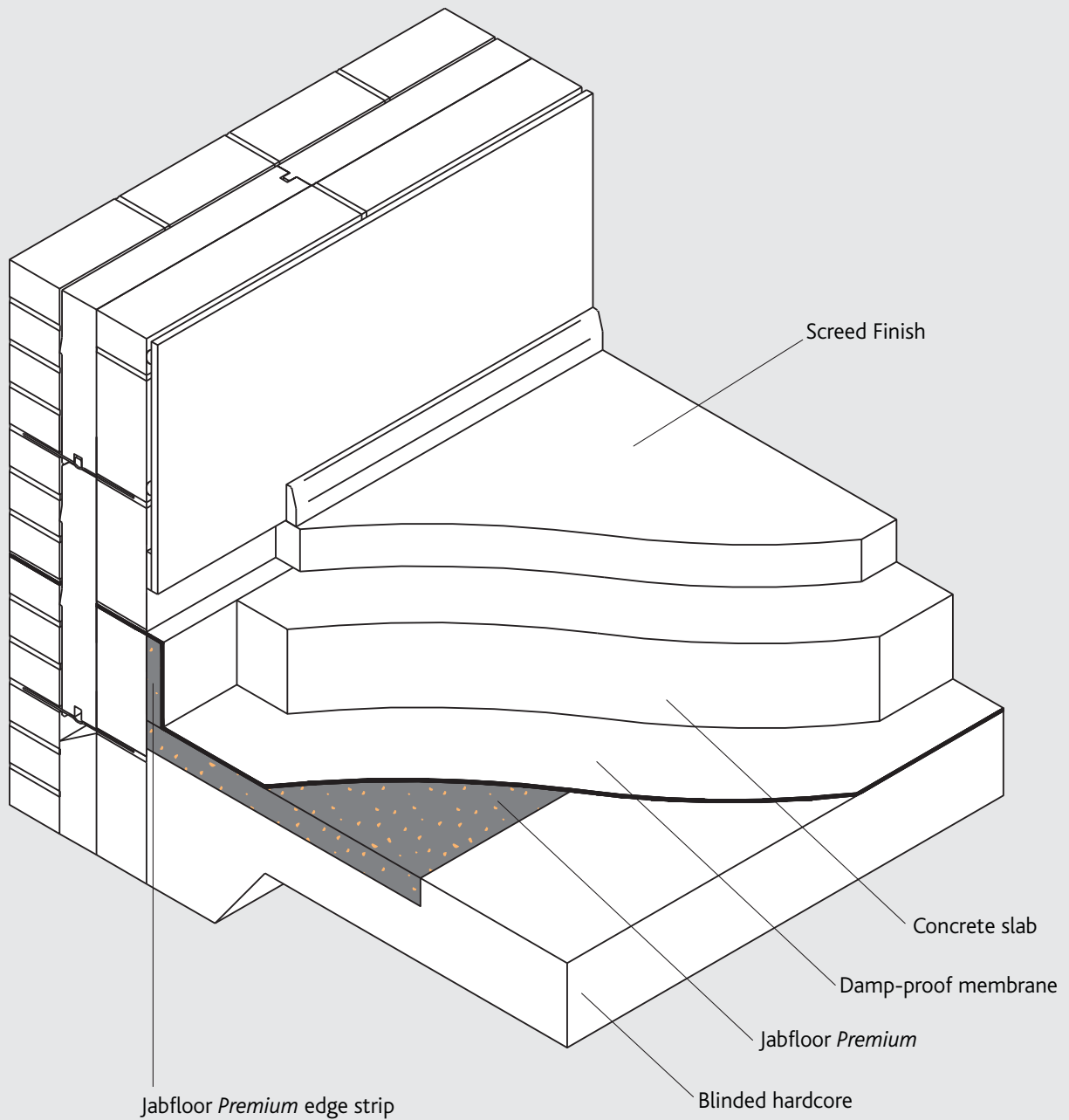
Standard thicknesses: 25, 30, 40, 50, 60, 75, 100, 120, 150 and 200mm
(Other thicknesses available to order).

Fire

Solid ground floors are not required to provide fire resistance. When properly installed, Jabfloor *Premium* is fully protected by the concrete and/or the screed and will have no adverse effect on the fire performance of the floor.

Floor insulation – perimeter floor

Figure 11.1



NOTE: Damp-proof membrane can be positioned below Jabfloor Premium or over concrete slab

Floor insulation – perimeter floor

INSTALLATION

Damp-proof membrane

Jabfloor *Premium* should not be regarded as a damp-proof membrane (DPM). A suitable DPM must be provided, positioned either above or below the Jabfloor *Premium*, or on top of the concrete slab; liquid membranes are positioned above the slab. The hardcore should be blinded before receiving either the Jabfloor *Premium* or the DPM. If a liquid DPM is used, care should be taken that it is compatible with the Jabfloor *Premium* and that it is completely dry before the insulation is laid.

Horizontal-edge insulation (Figure 11.2)

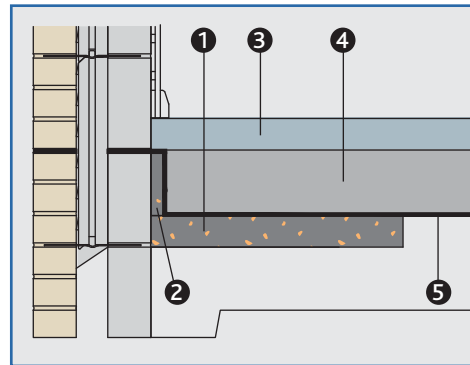
The site hardcore should be blinded level, with a suitable recess provided at the perimeter to receive the Jabfloor *Premium*.

Jabfloor *Premium* should be loose-laid over the prepared surface; all joints should be tightly butted. If the concrete slab is to be poured directly onto the Jabfloor *Premium*, the joints should be covered with 75mm-wide adhesive tape to prevent the ingress of concrete or grout between the boards.

If the cavity wall insulation is not continued below the level of the damp-proof course, small vertical upstand of Jabfloor *Premium* should be used around the perimeter to the height of the concrete slab to prevent cold bridging as detailed in BRE Report 262.

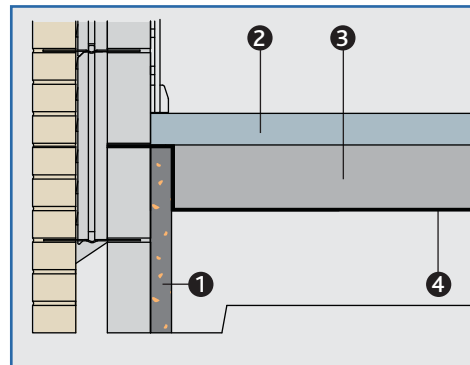
The concrete slab is laid to the required thickness and either tamped or power-floated to provide the required finish. During these operations, the surface of Jabfloor *Premium* or the DPM should be protected from impact damage or excessive trafficking by the use of spreader boards.

Figure 11.2
Horizontal insulation



1. Jabfloor *Premium*
2. Jabfloor edge strip
3. Screed
4. Concrete slab
5. Damp-proof membrane

Figure 11.3
Vertical insulation



1. Jabfloor *Premium*
2. Screed
3. Concrete slab
4. Damp-proof membrane

Vertical edge insulation

(Figure 11.3)

Vertical insulation is normally installed on the internal face of the foundation walls, and should be placed during construction so that the insulation board is supported on the concrete footing. The boards should be adequately restrained against the wall during backfilling.

The insulation should be protected from mechanical damage during backfilling operations and whilst the concrete slab is being poured.

References

BRE Report 262. Thermal insulation: avoiding risks – Third edition 2002.

BS EN 13163 Thermal insulation products for buildings – Factory made products of expanded (EPS) – Specification.

Floors | Walls | Roofs

Table 2.1

R-value	U-values					
	0.25 W/m ² K	0.22 W/m ² K	0.20 W/m ² K	0.18 W/m ² K	0.15 W/m ² K	0.10 W/m ² K
0.05	0.0	0.0	0.0	0.0	0.0	0.0
0.10	0.0	0.0	0.0	0.0	0.0	0.0
0.15	0.0	0.0	0.0	0.0	0.0	0.0
0.20	0.0	0.0	0.0	0.0	0.0	0.0
0.25	0.0	0.0	0.0	0.0	0.0	0.0
0.30	0.0	0.0	0.0	0.0	0.0	0.0
0.35	0.0	0.0	0.0	0.0	0.0	0.0
0.40	0.0	0.0	0.0	0.0	0.0	0.0
0.45	0.0	0.0	0.0	0.0	0.0	0.0
0.50	0.0	0.0	0.0	0.0	0.0	0.0
0.55	0.0	0.0	0.0	0.0	0.0	0.0
0.60	0.0	0.0	0.0	0.0	0.0	0.0
0.65	0.0	0.0	0.0	0.0	0.0	0.0
0.70	0.0	0.0	0.0	0.0	0.0	0.0
0.75	0.0	0.0	0.0	0.0	0.0	0.0
0.80	0.0	0.0	0.0	0.0	0.0	0.0
0.85	0.0	0.0	0.0	0.0	0.0	0.0
0.90	0.0	0.0	0.0	0.0	0.0	0.0
0.95	0.0	0.0	0.0	0.0	0.0	0.0
1.00	0.0	0.0	0.0	0.0	0.0	0.0

For more information about Jablite please contact us on:
Tel: 0870 600 3666
Email: sales@jablite.co.uk
Visit: www.jablite.co.uk



Jablite Limited
Head Office: Infinity House, Anderson Way, Belvedere, Kent DA17 6BG