

Jablite Limited

Infinity House
Anderson Way
Belvedere
Kent DA17 6BG
Tel: 020 8320 9100 Fax: 020 8320 9110
website: www.jablite.co.uk



Agrément Certificate
96/3215
Product Sheet 1

JABLITE FULL-FILL CAVITY WALL INSULATION

JABFILL PREMIUM

PRODUCT SCOPE AND SUMMARY OF CERTIFICATE

This Certificate relates to Jabfill Premium, an expanded polystyrene beadboard for use as thermal insulation in new external masonry cavity walls up to 12 m in height in domestic and non-domestic buildings.

AGRÉMENT CERTIFICATION INCLUDES:

- factors relating to compliance with Building Regulations where applicable
- factors relating to additional non-regulatory information where applicable
- independently verified technical specification
- assessment criteria and technical investigations
- design considerations
- installation guidance
- regular surveillance of production
- formal three-yearly review.

KEY FACTORS ASSESSED

Thermal performance — the product has a thermal conductivity ($\lambda_{90/90}$ value) of $0.030 \text{ W}\cdot\text{m}^{-1}\cdot\text{K}^{-1}$ and calculations for 'typical' wall constructions indicate U values between $0.36 \text{ W}\cdot\text{m}^{-2}\cdot\text{K}^{-1}$ and $0.16 \text{ W}\cdot\text{m}^{-2}\cdot\text{K}^{-1}$ (see section 5).

Rain penetration — the product will resist water transfer across the cavity and may be used in any exposure zone in suitably constructed walls (see sections 3 and 6).

Condensation — the product will contribute to limiting the risk of condensation (see section 7).

Behaviour in relation to fire — the product is classified as 'combustible', but can be used in suitably designed walls. The boards are classified as class E reaction to fire in accordance with BS EN 13501-1 : 2007 and contain a flame-retardant additive (see section 8).

Durability — the product will have a life equivalent to that of the wall structure in which it is incorporated (see section 11).



The BBA has awarded this Agrément Certificate to the company named above for the product described herein. This product has been assessed by the BBA as being fit for its intended use provided it is installed, used and maintained as set out in this Certificate.

On behalf of the British Board of Agrément

Date of Third issue: 7 October 2010

Chris Hunt

Greg Cooper

Originally certificated on 15 October 2008

Head of Approvals — Physics

Chief Executive

The BBA is a UKAS accredited certification body — Number 113. The schedule of the current scope of accreditation for product certification is available in pdf format via the UKAS link on the BBA website at www.bbacerts.co.uk

Readers are advised to check the validity and latest issue number of this Agrément Certificate by either referring to the BBA website or contacting the BBA direct.

British Board of Agrément
Bucknalls Lane
Garston, Watford
Herts WD25 9BA

©2010

tel: 01923 665300
fax: 01923 665301
e-mail: mail@bba.star.co.uk
website: www.bbacerts.co.uk

Regulations

In the opinion of the BBA, Jabfill Premium, if used in accordance with the provisions of this Certificate, will meet or contribute to meeting the relevant requirements of the following Building Regulations:



The Building Regulations 2010 (England and Wales)

Requirement: C2(a)	Resistance to moisture
Comment:	The product does not absorb water by capillary action and, therefore, may be used in situations where it bridges the dpc of the inner or outer leaf. See section 6.1 of this Certificate.
Requirement: C2(b)	Resistance to moisture
Comment:	Tests by the BBA indicate that a wall incorporating this product can resist rain penetration and satisfy this Requirement. See sections 3.2, 3.5 and 6.2 of this Certificate.
Requirement: C2(c)	Resistance to moisture
Comment:	The product can contribute to satisfying this Requirement. See sections 7.1 and 7.3 of this Certificate.
Requirement: L1(a)(i)	Conservation of fuel and power
Comment:	The product can contribute to meeting this Requirement. See sections 5.3 to 5.5 of this Certificate.
Requirement: Regulation 7	Materials and workmanship
Comment:	The product is acceptable. See section 11 and the <i>Installation</i> part of this Certificate.



The Building (Scotland) Regulations 2004 (as amended)

Regulation: 8(1)(2)	Fitness and durability of materials and workmanship
Comment:	The product can contribute to a construction satisfying this Regulation. See section 11 and the <i>Installation</i> part of this Certificate.
Regulation: 9	Building standards – construction
Standard: 2.6	Spread to neighbouring buildings
Comment:	This product is combustible but may be used in walls of buildings in accordance with the exceptions permitted in this Standard, with reference to clauses 2.6.5 ⁽¹⁾ and 2.6.6 ⁽²⁾ . See section 8.4 of this Certificate.
Standard: 3.4	Moisture from the ground
Comment:	The product does not absorb water by capillary action and, therefore, may be used where it bridges the dpc of the inner or outer leaf, with reference to clause 3.4.1 ⁽¹⁾⁽²⁾ . See section 6.1 of this Certificate.
Standard: 3.10	Precipitation
Comment:	Walls incorporating the product can satisfy this Standard, with reference to clauses 3.10.1 ⁽¹⁾⁽²⁾ and 3.10.3 ⁽¹⁾⁽²⁾ . See sections 3.2, 3.5 and 6.2 of this Certificate.
Standard: 3.15	Condensation
Comment:	The product can contribute to satisfying this Standard, with reference to clauses 3.15.1 ⁽¹⁾ , 3.15.4 ⁽¹⁾ and 3.15.5 ⁽¹⁾ . See sections 7.2 and 7.3 of this Certificate.
Standard: 6.1(b)	Carbon dioxide emission
Standard: 6.2	Building insulation envelope
Comment:	The product can contribute to satisfying clauses, or parts of clauses, 6.1.1 ⁽¹⁾ , 6.1.2 ⁽²⁾ , 6.1.6 ⁽¹⁾ , 6.2.1 ⁽¹⁾⁽²⁾ , 6.2.3 ⁽¹⁾ , 6.2.4 ⁽²⁾ , 6.2.9 ⁽¹⁾ , 6.2.10 ⁽²⁾ , 6.2.11 ⁽¹⁾ and 6.2.12 ⁽²⁾ . See sections 5.3 to 5.5 of this Certificate.
Regulation: 12	Building standards – conversions
Comment:	All comments given for this product under Regulation 9, also apply to this Regulation, with reference to clause 0.12.1 ⁽¹⁾ and Schedule 6 ⁽¹⁾ . (1) Technical Handbook (Domestic). (2) Technical Handbook (Non-Domestic).



The Building Regulations (Northern Ireland) 2000 (as amended)

Regulation: B2	Fitness of materials and workmanship
Comment:	The product is acceptable. See section 11 and the <i>Installation</i> part of this Certificate.
Regulation: C4(a)	Resistance to ground moisture and weather
Comment:	The product does not absorb water by capillary action and, therefore, may be used where it bridges the dpc of the inner or outer leaf. See section 6.1 of this Certificate.
Regulation: C4(b)	Resistance to ground moisture and weather
Comment:	Walls incorporating the product can satisfy this Regulation. See sections 3.2, 3.5 and 6.2 of this Certificate.
Regulation: C5	Condensation
Comment:	The product can contribute to satisfying this Regulation. See section 7.3 of this Certificate.
Regulation: F2(a)(i)	Conservation measures
Comment:	The product can satisfy or contribute to satisfy this Regulation. See sections 5.3 to 5.5 of this Certificate.
Regulation: F3(2)	Target carbon dioxide Emissions Rate
Comment:	The product can contribute to a building satisfying its target emission rate. See section 5.4 and 5.6 of this Certificate.

In the opinion of the BBA, there is no information in this Certificate which relates to the obligations of the client, CDM co-ordinator, designer and contractors under these Regulations.

Non-regulatory Information

NHBC Standards 2010

NHBC accepts the use of Jabfill Premium, when installed and used in accordance with this Certificate, in relation to NHBC Standards, Chapter 6.1 External masonry walls.

General

This Certificate relates to Jabfill Premium, an expanded polystyrene beadboard for use as thermal insulation in new external masonry cavity walls up to 12 m in height in domestic and non-domestic buildings.

Technical Specification

1 Description

1.1 Jabfill Premium comprises a grey EPS 70 expanded polystyrene board manufactured to BS EN 13163 : 2001 and has a class E reaction to fire classification to BS EN 13501-1 : 2007.

1.2 The boards have the nominal characteristics of:

Size (mm) 1200 x 450 (nominal)
Thickness⁽¹⁾ (mm) 75, 100, 125 and 150.

(1) Includes projecting flutes (see Figure 2).

1.3 Each board incorporates a specially designed tongue-and-groove edging on all four edges, enabling the boards to interlock when installed.

1.4 The external face of the board incorporates tapered flutes to provide a drainage plane and shed water away from the internal leaf and act as a guide to the construction of the outer leaf. Each board is marked to identify the correct orientation for installation (see Figures 1 and 2).

Figure 1 Jabfill Premium panel (all dimensions in mm)

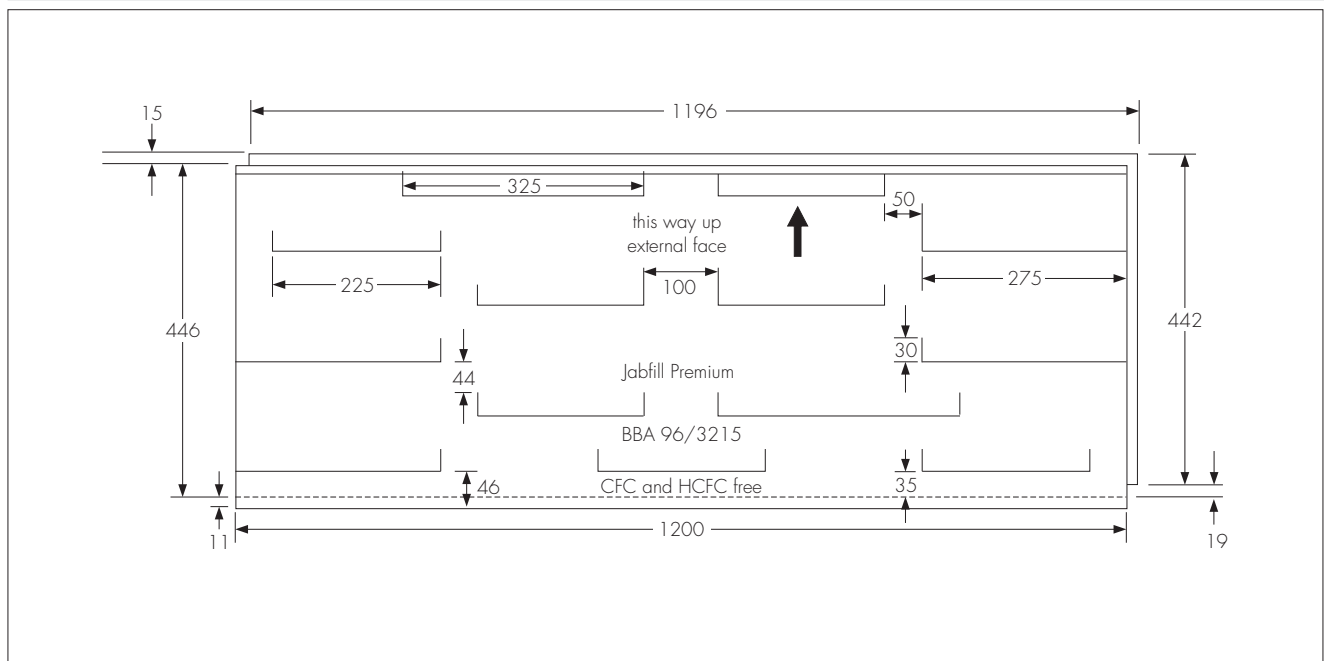
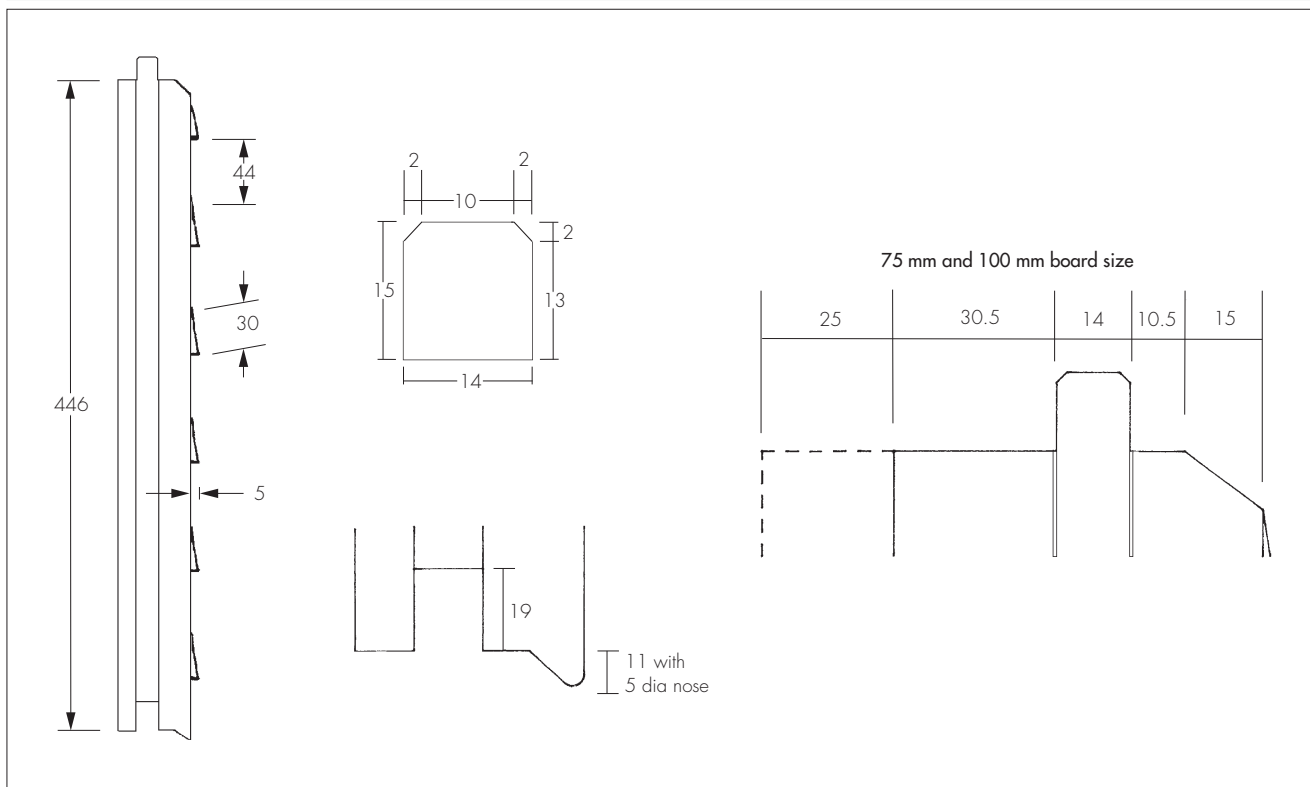


Figure 2 Jabfill Premium panel — side elevation (all dimensions in mm)



2 Delivery and site handling

2.1 The boards are delivered to site in packs wrapped in polythene. Each pack contains a label bearing the manufacturer's trade name and the BBA identification mark incorporating the number of this Certificate.

2.2 The product should be protected from prolonged exposure to sunlight and should be stored either under cover or protected with opaque polythene. Care should be taken to avoid contact with solvents and with materials containing volatile organic components such as coal tar, pitch, timber newly treated with creosote.

2.3 The boards must be stored flat, protected from high winds and raised above damp surfaces.

2.4 The boards must not be exposed to open flame or other ignition sources.

Assessment and Technical Investigations

The following is a summary of the assessment and technical investigations carried out on Jabfill Premium.

Design Considerations

3 Use

3.1 Jabfill Premium is effective in reducing the U value (thermal transmittance) of cavity walls with masonry inner and outer leaves, where masonry includes clay and calcium silicates bricks, concrete blocks, natural and reconstituted stone blocks, in new buildings up to 12 m in height.



3.2 New buildings subject to national Building Regulations and Standards should be suitable when assessed in accordance with the relevant recommendations of:

- BS EN 1996-2 : 2006
- BS 8000-3 : 2001.

3.3 Other new buildings not subjected to any of the above should also be built in accordance with BS EN 1996-2 : 2006 and BS 8000-3 : 2001.

3.4 As with any other form of cavity wall insulation, where buildings need to comply with *NHBC Standards 2010*, specifiers should observe the requirements of these Standards.



3.5 The product is for use in any exposure zone. However, the use of the product does not preclude the need to apply an external render coat or other suitable finish in severe exposure zones where such application would be normal practice.

3.6 To reduce the risk of water penetration, raked or recessed mortar joints should be avoided in severe or very severe exposure zones.

3.7 The use of cavity battens and/or boards is strongly recommended to prevent bridging by mortar droppings.

4 Practicability of installation

The product should only be installed by a competent general builder, or a contractor, experienced with this type of product.

5 Thermal performance

5.1 Calculations of the thermal transmittance (U value) of specific external wall constructions should be carried out in accordance with BS EN ISO 6946 : 2007, BRE report (BR 443 : 2006) *Conventions for U-value calculations* using $0.030 \text{ W}\cdot\text{m}^{-1}\cdot\text{K}^{-1}$ as the thermal conductivity ($\lambda_{90/90}$ value) of the product.

5.2 The U value of a completed wall will depend on the selected insulation thickness and the insulating value of the masonry and the internal finishes. Calculated U values for example constructions are given in Table 1.

Table 1 Typical cavity wall U values ($\text{W}\cdot\text{m}^{-2}\cdot\text{K}^{-1}$)⁽¹⁾

Width	13 mm dense plaster 100 mm dense block ⁽²⁾	Plasterboard on dabs 100 mm AAC block ⁽³⁾
75	0.36	0.28
100	0.28	0.23
125	0.23	0.19
150	0.19	0.16

(1) Assume 102 mm thick brick outer leaf.

(2) Block and plaster thermal conductivity $1.13 \text{ W}\cdot\text{m}^{-1}\cdot\text{K}^{-1}$.

(3) Block and mortar thermal conductivity $0.12 \text{ W}\cdot\text{m}^{-1}\cdot\text{K}^{-1}$.



5.3 When considering insulation requirements, designers should refer to the detailed guidance contained in the documents supporting the national Building Regulations. The U values shown in Table 1 indicate that the product can enable, or contribute to achieve typical design U values referred to in those supporting documents. See Tables 2, 3 and 4.

Table 2 Mean design wall U values — England and Wales⁽¹⁾

Construction	$\text{W}\cdot\text{m}^{-2}\cdot\text{K}^{-1}$
Existing building – new and replaced wall	0.28
Dwelling new-build limit	0.30
Notional dwelling	0.35
Non-domestic new-build limit	0.35

(1) Flexible approaches on existing buildings are given in the Approved Documents.

Table 3 Mean design wall U values — Scotland⁽¹⁾

Construction	$\text{W}\cdot\text{m}^{-2}\cdot\text{K}^{-1}$
Notional dwelling	0.19
New dwelling simplified method	0.19
Conversion unheated building (into dwellings)	0.19
Extension to dwelling	0.19
Alterations and reconstructions to a dwelling	0.22
Stand-alone building < 50 m ² to a dwelling	0.22
New non-dwellings limit for shell and fit out	0.23
New dwelling limit	0.25
Conversion of unheated building	0.25
Non-domestic extension, alterations and reconstructions	0.25
New non-domestic limit	0.27
Conversion of heated building	0.30
Notional non-dwelling	0.30

(1) Flexible approaches on existing buildings are given in the Technical Handbooks.

Table 4 Mean design wall U values — Northern Ireland⁽¹⁾

Element	W·m ⁻² ·K ⁻¹
Existing building – new wall	0.30
Notional dwelling	0.35
Notional non-domestic building	0.35
Building new-build limit	0.35
Existing building – replaced wall	0.35

(1) Flexible approaches on existing buildings are given in the Technical Booklets.

New buildings

5.4 Walls with U values lower than (or the same as, for dwellings in Scotland) the relevant 'notional' value specified in Tables 2, 3 and 4 will contribute to a building meeting its Target Emission Rate. Walls with higher U values will require additional energy saving measures in the building envelope and/or services.

5.5 The product can maintain, or contribute to maintaining, continuity of thermal insulation at junctions between elements. For Accredited Construction Details the corresponding psi values in IP/06 Table 3 may be used in carbon emission calculations in Scotland and Northern Ireland. For new-build in England and Wales these values should be increased by whichever is the greater of 0.02 or 25% for new dwellings and 0.04 or 50% for new non-dwellings. Detailed guidance for other junctions and on limiting heat loss by air infiltration can be found in:

England and Wales — Approved Documents to Part L and for new thermal elements to existing buildings, Accredited Construction Details (version 1.0)

Scotland — Accredited Construction Details (Scotland)

Northern Ireland — Accredited Construction Details (version 1.0).

5.6 For existing buildings, extensions, conversions etc, walls will be acceptable where they do not exceed the relevant U value in Tables 2, 3 and 4 and junctions and openings comply with section 5.5 or BR 262 : 2002 *Thermal insulation : avoiding risks*.

6 Liquid water penetration



6.1 Tests by the BBA demonstrate that when the product is used in situations where it bridges the dpc in walls, dampness from the ground will not pass through to the inner leaf provided the wall is detailed in accordance with the requirements and provisions of the national Building Regulations:

England and Wales — Approved Document C, Section 5

Scotland — Mandatory Standard 3.4, clause 3.4.5⁽¹⁾⁽²⁾

(1) Technical Handbook (Domestic).

(2) Technical Handbook (Non-Domestic).

Northern Ireland — Technical Booklet C, Section 1.6.

6.2 Tests by the BBA confirm that constructions built in accordance with BS EN 1996-2 : 2006, will prevent water reaching the inner leaf in damaging amounts. Water penetrating the outer leaf of the wall, will drain down the cavity face of the outer leaf and the product will contribute to satisfying the national Building Regulations:

England and Wales — Requirement C2(b)

Scotland — Mandatory Standard 3.10, clauses 3.10.1⁽¹⁾⁽²⁾ and 3.10.3⁽¹⁾⁽²⁾

(1) Technical Handbook (Domestic).

(2) Technical Handbook (Non-Domestic).

Northern Ireland — Regulation C4(b).

6.3 In all situations it is particularly important to ensure during installation that:

- installation is to be carried out to the highest level on each wall or the top edge of the insulation is protected by a cavity tray
- wall ties are installed correctly and are thoroughly clean
- excess mortar is cleaned from the cavity face of the leading leaf
- mortar droppings are cleaned from the exposed edges of installed boards.

7 Condensation

Surface condensation



7.1 Walls will limit the risk of surface condensation adequately when the thermal transmittance (U value) does not exceed 0.7 W·m⁻²·K⁻¹ at any point, and the junctions with floors, roofs and openings are designed in accordance with *Limiting thermal bridging and air leakage : Robust construction details for dwellings and similar buildings* TSO 2002 or BRE Information Paper IP 1/06.



7.2 For buildings in Scotland, constructions will be acceptable where the thermal transmittance (U value) of the wall does not exceed 1.2 W·m⁻²·K⁻¹ at any point and openings and junctions with other elements comply with the guidance given in BS 5250 : 2002, Section 8, BRE report (BR 262 : 2002) *Thermal insulation : avoiding risks*.

Interstitial condensation



7.3 Walls will limit the risk of interstitial condensation adequately when they are designed and constructed in accordance with BS 5250 : 2002, Section 8 and Annex D.

7.4 The product has a nominal vapour resistivity exceeding $145 \text{ MN}\cdot\text{sg}^{-1}\cdot\text{m}^{-1}$ and, therefore, will provide a significant resistance to water vapour transmission.

7.5 If the product is to be used in the external wall of rooms expected to have high humidity, care must be taken to provide adequate permanent ventilation to avoid possible problems from the formation of interstitial condensation in the internal wall leaf.

8 Behaviour in relation to fire

8.1 The product is classified as 'combustible' and has a Class E reaction-to-fire classification to BS EN 13501-1 : 2007. It does not prejudice the fire-resistance properties of the wall. It is unlikely to become ignited within the cavity when used in the context of this Certificate. If fire does penetrate into an unventilated cavity, the amount of air present will be insufficient to support combustion and flame spread will be minimal.

8.2 The requirements of the Building Regulations relating to fire spread in cavity walls can be met in buildings of all purpose groups without the need for cavity barriers, provided the construction complies with the provisions detailed in:

England and Wales — Approved Document B, Volume 1, Diagram 13, and Volume 2, Diagram 34

Northern Ireland — Technical Booklet E, Diagram 3.5.

A summary of these provisions is given here:

- the wall must consist of masonry inner and outer leaves, each at least 75 mm thick
- the cavity must be closed at the top of the wall and at the top of any opening
- domestic meter cupboards may be installed provided there are not more than two to a dwelling, the opening in the outer leaf is not more than 800 mm by 500 mm for each cupboard, and the inner leaf is not penetrated except by a sleeve not more than 80 mm by 80 mm, which is fire-stopped
- combustible materials may be placed within the cavity (England and Wales only)
- the cavity must not be more than 300 mm wide (Northern Ireland only)
- in addition to the insulation, in Northern Ireland, only the following should be placed in, or exposed to, the cavity:
 - timber lintels, window or door frames, or end of timber joists
 - pipe, conduit or cable
 - dpc, flashing, cavity closer or wall tie.

8.3 For constructions not covered by section 8.2, cavity barriers must be provided to comply with:

England and Wales — Approved Document B, Volume 1, Section 6, and Volume 2, Section 9

Scotland — Mandatory Standard 2.4, clauses 2.4.1⁽¹⁾⁽²⁾, 2.4.2⁽¹⁾⁽²⁾, 2.4.7⁽¹⁾ and 2.4.9⁽²⁾.

(1) Technical Handbook (Domestic).

(2) Technical Handbook (Non-Domestic).

Northern Ireland — Technical Booklet E, Paragraphs 3.35 to 3.38.



8.4 The product is combustible but may be used not more than one metre from a boundary, in walls with two leaves of masonry/concrete at least 75 mm thick, with barriers around all openings and at the top of the wall in accordance with Mandatory Standard 2.6, clauses 2.6.5⁽¹⁾ and 2.6.6⁽²⁾.

(1) Technical Handbook (Domestic).

(2) Technical Handbook (Non-Domestic).

9 Proximity of flues and appliances

When installing the product in close proximity to certain flue pipes and/or heat producing appliances, the relevant provisions of the national Building Regulations are applicable:

England and Wales — Approved Document J

Scotland — Mandatory Standard 3.19, clauses 3.19.1⁽¹⁾⁽²⁾ to 3.19.4⁽¹⁾⁽²⁾ and 3.19.8⁽¹⁾⁽²⁾.

(1) Technical Handbook (Domestic).

(2) Technical Handbook (Non-Domestic).

Northern Ireland — Technical Booklet L.

10 Maintenance

As the product is confined within the wall cavity and it has suitable durability (see section 11), maintenance is not required.

11 Durability



The product is durable, rot-proof, water resistant and sufficiently stable to remain effective as an insulant for the life of the building.

12 General

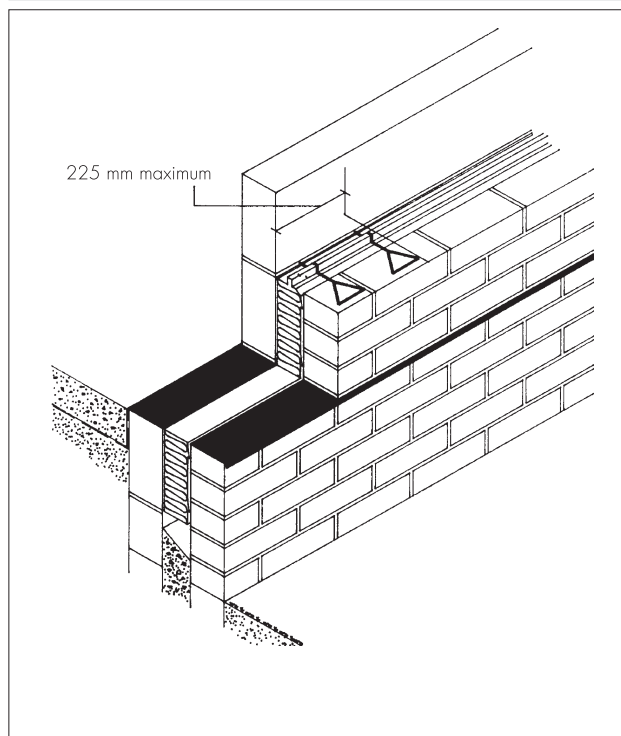
12.1 To comply with this Certificate, the Certificate holder's specialists experienced in site practice and installation, on request, will attend the site to provide demonstrations to ensure correct installation from the outset.

12.2 Adequate supervision of the installation shall be maintained and the Certificate holder's specialists should have right of access to site to ensure correct installation.

12.3 The internal leaf is constructed ahead of the external leaf. Any mortar protruding into the cavity space from the back of the internal leaf shall be cleaned off before installing the product.

12.4 Additional wall ties at 300 mm and vertical centres within 225 mm of all openings are recommended in BS EN 1996-2 : 2006. For this product, this would involve piercing the boards and may introduce an unacceptable risk of water penetration. Therefore, it is recommended that an additional wall tie is included within 225 mm of the opening on each board course level to satisfy the structural requirements of the wall (see Figure 3).

Figure 3 Reveal detail with double ties



12.5 Double-triangle wall ties, without drips, but otherwise conforming to BS EN 845-1: 2003, are suitable for use with this product. Other ties approved by the Certificate holder may also be suitable.

13 Procedure

13.1 Walls are constructed in the conventional manner, with the first row of wall ties where the insulation is to begin, but not on the damp-proof course, and at approximately 600 mm horizontal spacing. The first run of boards may commence below damp-proof course level to provide some edge insulation for the floor (see Figure 4).

13.2 A section of the wall leaf is built up to a course above the next row of wall ties which are placed at the usual spacing of 450 mm vertically and not more than 900 mm horizontally (see BS EN 1996-2 : 2006).

13.3 The boards are placed between the upper and lower wall ties to form a closely butt-jointed run. It is essential that all wall ties slope downwards towards the outer leaf.

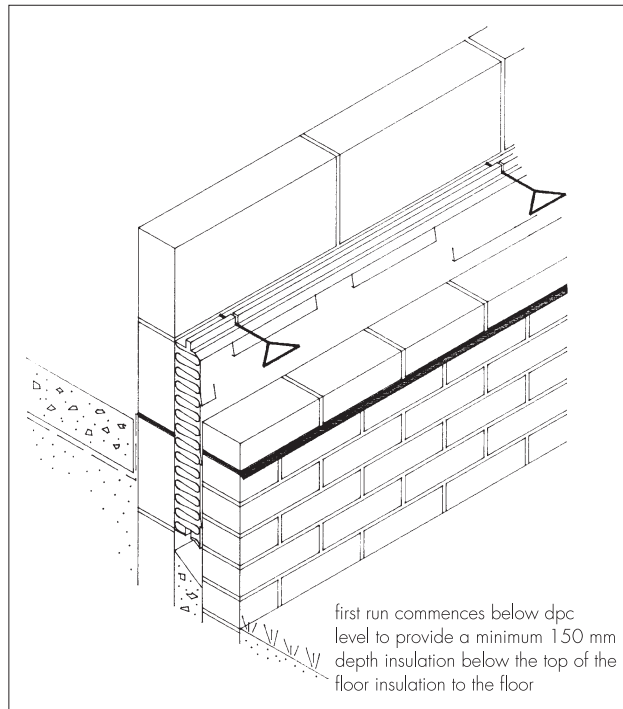
13.4 The boards incorporate a specially designed tongue-and-groove edging and are faced on one side with projecting tapered flutes. For this design to function correctly it is essential that the boards are positioned with the horizontal tongued edge uppermost and the fluted face against the outer leaf.

13.5 The tongued edge is cut with a sharp knife or fine-tooth saw to allow insertion of the double-triangle wall ties. Care must be taken to ensure that only minimal damage is incurred during this process.

13.6 The other leaf is built up to the same level as the boards, with its inner face in contact with the boards.

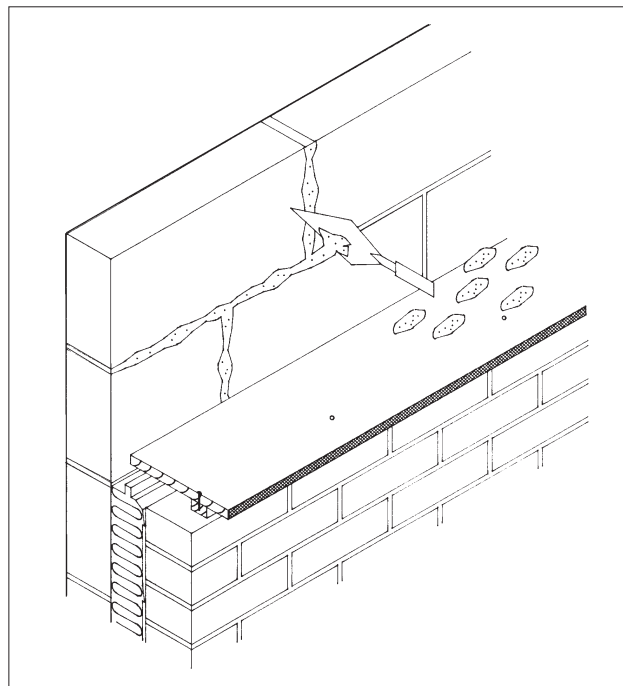
13.7 Successive sections of wall, incorporating wall ties, are constructed and the boards installed as work proceeds up to the required height.

Figure 4 Building in the first row of boards



13.8 After each section of the wall leaf is built, excess mortar should be removed and mortar droppings cleaned from exposed edges of the installed board before installation of the next section. Use of a cavity board is recommended to protect board edges and make cleaning easier (see Figure 5).

Figure 5 Use of cavity board when cleaning off excess mortar

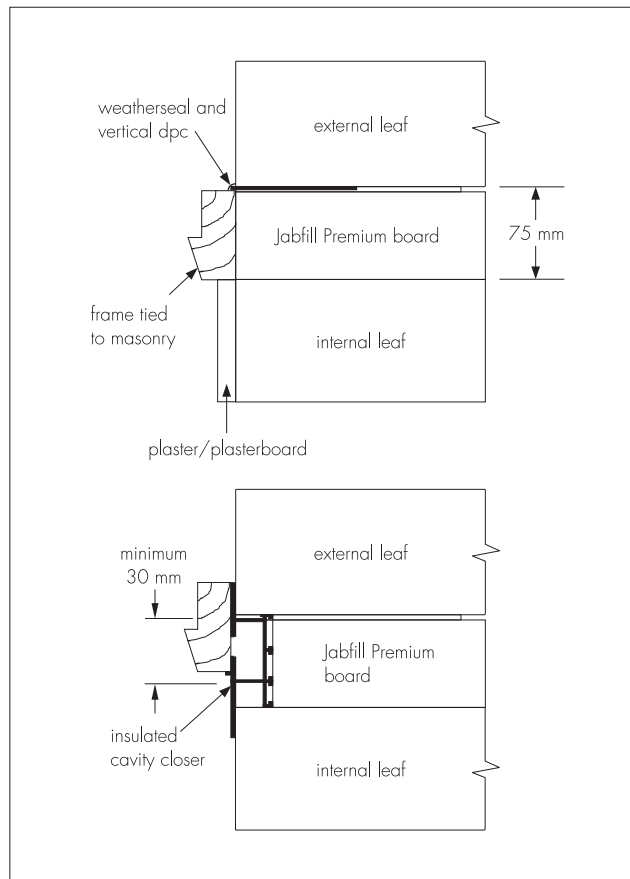


13.9 Boards can be cut using a fine-tooth saw, to fit around windows, doors, air bricks. It is essential that they are cut accurately so that the cut pieces completely fill the spaces for which they are intended and that no gaps are left in the insulation.

13.10 Where openings such as doors and windows are in close proximity, it is recommended that a continuous lintel is used. Damp-proofing at lintel level must be provided with stop ends and weepholes.

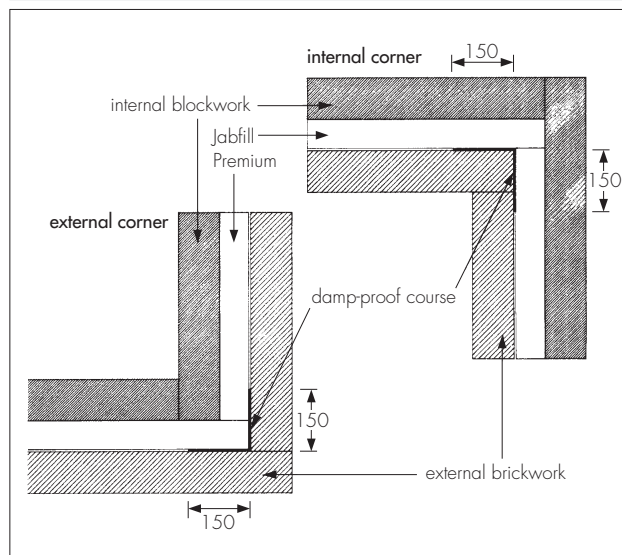
13.11 Where required, door and window reveals should incorporate a cavity closure depending on the set-back of the frame (see Figure 6). It is recommended that BBA-approved cavity closers are used.

Figure 6 Reveal details



13.12 Corner details are formed by interlocking the boards. It is important that they are closely butt-jointed and, therefore, the tongue should be carefully removed where necessary so that all interfaces are uninterrupted. The tapered flutes are removed at internal corners only. All corner details incorporate a vertical dpc (see Figure 7).

Figure 7 Corner detail (all dimensions in mm)



13.13 The boards should always be installed to the highest level of each wall.

13.14 If installation of boards is terminated at any other levels, the top edge of the insulation must be protected by a cavity tray and alternate perpend joints raked out to provide adequate drainage of water from this tray.

Protection

13.15 All building involving the product, particularly interrupted work, must conform to BS EN 1996-2 : 2006.

14 Investigations

14.1 The manufacturing process was examined, including the methods adopted for quality control, and details were obtained of the quality and composition of the materials used.

14.2 As part of the assessment, tests were carried out to determine:

- density
- dimensional accuracy.

14.3 An examination was made of data relating to:

- water resistance of a cavity wall with the boards
- cross-breaking strength
- water vapour permeability
- compressive strength
- dimensional stability
- behaviour in fire.

14.4 An assessment of the thermal and hygrothermal properties of the product was made including U value and condensation risk calculations for typical constructions.

Bibliography

BS 5250 : 2002 *Code of practice for control of condensation in buildings*

BS 8000-3 : 2001 *Workmanship on building sites — Code of practice for masonry*

BS EN 845-1 : 2003 *Specification for ancillary components for masonry — Ties, tension straps, hangers and brackets*

BS EN 1996-2 : 2006 *Eurocode 6 : Design of masonry structures — Design considerations, selection of materials and execution of masonry*

BS EN 13163 : 2001 *Thermal insulation products for buildings — Factory made products of expanded polystyrene (EPS) — Specification*

BS EN 13501-1 : 2007 *Fire classification of construction products and building elements. Classification using test data from reaction to fire tests*

15 Conditions

15.1 This Certificate:

- relates only to the product/system that is named and described on the front page
- is granted only to the company, firm or person named on the front page — no other company, firm or person may hold or claim any entitlement to this Certificate
- is valid only within the UK
- has to be read, considered and used as a whole document — it may be misleading and will be incomplete to be selective
- is copyright of the BBA
- is subject to English law.

15.2 Publications and documents referred to in this Certificate are those that the BBA deems to be relevant at the date of issue or re-issue of this Certificate and include any: Act of Parliament; Statutory Instrument; Directive; Regulation; British, European or International Standard; Code of Practice; manufacturers' instructions; or any other publication or document similar or related to the aforementioned.

15.3 This Certificate will remain valid for an unlimited period provided that the product/system and the manufacture and/or fabrication including all related and relevant processes thereof:

- are maintained at or above the levels which have been assessed and found to be satisfactory by the BBA
- continue to be checked as and when deemed appropriate by the BBA under arrangements that it will determine
- are reviewed by the BBA as and when it considers appropriate.

15.4 In granting this Certificate, the BBA is not responsible for:

- the presence or absence of any patent, intellectual property or similar rights subsisting in the product/system or any other product/system
- the right of the Certificate holder to manufacture, supply, install, maintain or market the product/system
- individual installations of the product/system, including the nature, design, methods and workmanship of or related to the installation
- the actual works in which the product/system is installed, used and maintained, including the nature, design, methods and workmanship of such works.

15.5 Any information relating to the manufacture, supply, installation, use and maintenance of this product/system which is contained or referred to in this Certificate is the minimum required to be met when the product/system is manufactured, supplied, installed, used and maintained. It does not purport in any way to restate the requirements of the Health & Safety at Work etc Act 1974, or of any other statutory, common law or other duty which may exist at the date of this Certificate; nor is conformity with such information to be taken as satisfying the requirements of the 1974 Act or of any statutory, common law or other duty of care. In granting this Certificate, the BBA does not accept responsibility to any person or body for any loss or damage, including personal injury, arising as a direct or indirect result of the manufacture, supply, installation, use and maintenance of this product/system.